



Matches and Challenges

Best Practices

Learn some great tips to maximize each donations impact for your day!

What are Matches?

What is a matching gift?

- A pledged donation that's contributed to your organization when you hit a specific milestone or when individual donations come in adding up to the amount
- Promotional tool used to motivate potential donors to make a greater impact with their donation
- Usually time based to create a sense of urgency, but can be based on a monetary amount which gets matched based on incoming donations.

What are Matches?

- ✓ Donations will be matched up to \$20
- ✓ 1pm - 2pm power hour



Rudy's Pet Supply: Puppy Power Hour

DOUBLE your impact by making a gift during the 1pm - 2pm power hour. Rudy's Pet Supply will MATCH your gift up to \$20.

\$300 MATCH

\$300 REMAINING

What are Challenges?

What is a challenge?

- Challenges are very similar to matches, however, they offer more flexibility and creativity!
- The "Challenge" feature on the GiveGab platform allows your organization and the sponsoring organization to set a goal that, once reached, **unlocks** a donation of a predetermined amount from the sponsoring organization.

What are Challenges?

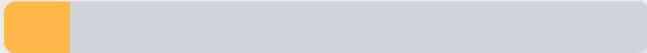
- Donor Challenge vs Dollar Challenge
- On GiveGab, we call these gifts **non-automatched**, or **conditional**, gifts. Your nonprofit will only receive the matching dollars if you reach the **entirety** of the goal amount.
- Challenge amounts are recorded on your organization as an **offline donation**. The actual funds must be collected outside of GiveGab, usually via check directly from the sponsor.

What are Challenges?



Rudy's Pet Supply: Puppy Power

All gifts, no matter how small, will do mighty things for Cadi's Canines! \$300 will unlock an additional \$1,000 thanks to a GENEROUS gift from our friends at Ruby's Pet Supply.



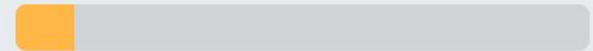
\$300 more unlocks **\$1,000!**

✓ \$300 will unlock \$1,000



Rudy's Pet Supply: Puppy Power

All gifts, no matter how small, will do mighty things for Cadi's Canines! If we receive 25 unique donors during The Great Give®, an additional \$1,000 will be unlocked thanks to a GENEROUS gift from our friends at Ruby's Pet Supply.



25 more donors unlocks **\$1,000!**

✓ 25 unique donors
will unlock \$1,000

Benefits of Matches and Challenges

- **Match:** Organizations with matching funds raise on average 4.5x more than organizations without a match
- **Match:** Opportunity to highlight existing donors and sponsors
- **Match:** Motivates potential donors to have a greater impact by donating when their gift is matched
- **Challenge:** Great tool for smaller gift amounts. For example, gifts under \$500 may be considered too small to set up dollar for dollar matches with, however, they can be great if used as a challenge to encourage teamwork among donors to unlock additional funds for your organization.

Benefits of Matches and Challenges

- **Challenge:** Perfect for non 1:1 ratios of donations to sponsor funds. Matches currently support 1:1 matching only. With a challenge, you have more flexibility, such as 50 cent to every dollar donation up to \$1,000 can be set as a challenge where \$2,000 unlocks a \$1,000 challenge!
- **Challenge:** Promotes a friendly, game-like challenge where friends, family, or board members can work together to unlock a “prize” for the organization they wish to support. Since it requires the goal to be met for any money to be received, it is more of a test of teamwork than using a match, which essentially rewards every incoming donation.

Potential Match and Challenge Sponsors

- Board Members
- Existing Donors
- Local Businesses
- Corporations
- Community Leaders
- Devoted Staff

Educate your
sponsors on the
benefits their gift can
provide and how their
contribution is
stretched for greater
overall impact

Promoting Your Match or Challenge

- Feature any active matches or challenges during The Great Give® on your profile
- Keep the details of your match or challenge as clear as possible
 - What goal do you need to reach? When is the match or challenge active? What do donors need to do to have their gift matched? What do donors need to raise to unlock the challenge amount?

Promoting Your Match or Challenge Cont.

- Brand your match or challenge and promote on all online platforms
 - **Example:** Support Logan's Pups on 5/5 during the ***Double Dollar Dash!*** Every donation received on 5/5 will be matched thanks to our sponsor!
 - **Example:** Help Logan's Pups accomplish our ***Puppy Love Challenge!*** We need to raise \$1,000 in donations to receive a \$500 bonus from our sponsor at Rudy's Pet Supply!

Creative Matches and Challenges

Power Hour Match

- Set match parameters to a specific time frame, creating a greater sense of urgency during the day or event
- Opportunity to stimulate donors during non-peak hours
- Great for featuring smaller matches and multiple sponsors

Morning Match!

All donations made from 7am - 9am will be DOUBLED thanks to our generous sponsor, Debbie's Pet Supply!

Social Engagement Match

- Encourage more online engagement through a social media match through liking and sharing
- Opportunity to cross promote with match sponsors existing social media network and your own

Social Superstars Match!

For every like this post receives our generous board of trustees will donate \$1 up to \$1,000! Like and share today only and help us make a difference!

Donor Challenge

- Motivate both new and repeat donors to contribute together to reach a higher donor goal
- Great way to capture new donors and build new relationships with them after the day

Teamwork Challenge!

Have you been waiting for the perfect opportunity to make your donation to Logan's Pups? Now's your chance! Fifty donors will unlock a \$500 gift thanks to a challenge sponsor from Debbie's Pet Supply!

Board Member Participation Challenge

- Challenge your board members to increase their participation and donate to your campaign or event
- Encourages teamwork within companies and organizations, promoting a friendly yet competitive atmosphere!

Board Member Challenge!

Calling all Logan's Pups board members! If every board members makes a gift on 5/5, Debbie's Pet Supply will add an additional \$1000 to our total!

Business Employee Match

- Encourage businesses to offer matching gifts for their employees when they support an organization on the day
- Work with sponsor to promote opportunity internally to their team members
- Create a fun, game-like event for employees where they can work in teams to unlock additional funds

Debbie's Pet Posse Match!

Support an organization on 5/6 and we will make an additional contribution in your name as a way to say thanks for being part of the team!

**Featuring A Match
or Challenge during
The Great Give®**

Adding a Match or Challenge to your The Great Give® profile

Get Set Up

Complete the steps below to be sure that you are set up and ready to participate in Giving Day.

- ✓ Add Your Organization's Info >
- ✓ Add Your Story >
- ✓ Add Bank Account Info >
- ✓ Add Donation Levels >
- ✓ Add a 'Thank You' Message >
- ✓ Add Fundraisers >

Share Your Page

www.givingday.org/organizations/logan-s-puj

[View Your Page](#)

More Actions

- [Add An Administrator](#)
- [Add Offline Donation](#)
- [Manage Sponsor Matching](#)
- [Manage Donations](#)

From your Giving Day Dashboard on GiveGab, click “[Manage Sponsor Matching](#)”

Add Your Match - Step 1

Organization Sponsor Matching

Any and all donations to your organization will be eligible for these matches, including donations to Giving Day profiles and all campaigns/events. To set up matching for a specific campaign only, please go to [the edit page](#) for that campaign.

+ Add Match Commitment

Manage Donations



Click the button above to create a new matching opportunity to feature right on your The Great Give® profile

Customize Your Match - Step 2

Logo

Select Image

Remove

Tip: Disable adblockers on this page for the best logo uploading experience.

Sponsor Name

Debbie's Pet Suply

URL (optional)

www.debbiespetsuply.com

Does the sponsor wish to be anonymous for this match? We can hide their name from donation listings and match announcements. (optional)

☐ Keep Sponsor Anonymous

Highlight Matching Sponsor

- Sponsor Name
- Sponsor's Website
- Sponsor's Logo
- Or keep your sponsor anonymous

Customize Your Match - Step 3

Does this match only apply to donations made within a certain time period? (optional)

Please note that times are in Eastern Time.

Donation Matching Start Time

Donation Matching End Time

☒ Enable Auto Matching

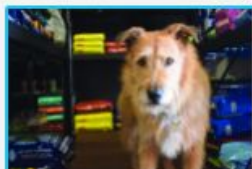
We will automatically generate a matching offline donation for each GiveGab donation that comes in online between the above dates (if provided), until all the funds are depleted! (You can always edit them later if needed.)

How it Works: Matching offline donations will be created automatically in the amount equal to the matched online donation (up to the maximum individual match allowed). If the remaining available matching funds are less than these values, a donation will be partially matched. If a time range is provided, matching offline donations will only be created for online donations made during this time range.

Update Match Parameters

- Match Start Time (optional)
- Match End Time (optional)
- Auto Matching
 - Enables 1:1 donation matching in real time!

View Your Match!



\$25

Provides one week of food for a senior pup



\$50

Provides a super soft bed for a loving senior pup



\$100

Covers cost of rescuing a senior pup from a kill shelter



\$500

Provides life changing surgery to a senior pup in need

CHOOSE YOUR OWN AMOUNT

More Than Just A Shelter



At Logan's Pups we offer more than just a home to dogs in need, we're in the business of turning lives around. Each

Matches

Debbie's Pet Supply: Giving Tuesday Match!

Your donations will be DOUBLED on #GivingTuesday thanks to a generous match from our friends at Debbie's Pet Supply!

\$5,000 MATCH

\$4,850 REMAINING

Fundraising Champions

Laryssa Hebert

\$500.00

Customize your Challenge- Part 1

Logo

Tip: Disable adblockers on this page for the best logo uploading experience.

Sponsor Name

URL (optional)

Does the sponsor wish to be anonymous for this match? We can hide their name from donation listings and match announcements. (optional)

☐ Keep Sponsor Anonymous

Challenge Name

Description (optional)

Challenge Type

Challenge Goal

Challenge Amount

Customize your Challenge- Part 2

Update Challenge Details

- Select the type of challenge
- Set the challenge goal
- Set the challenge amount

Challenge Type



Dollar Challenge ▼

A **Dollar Challenge** is fulfilled and an offline donation is created when a certain amount is raised.
A **Donor Challenge** is fulfilled and an offline donation is created when a certain number of unique donors have given.

Challenge Goal



How many dollars or donors are needed to complete this challenge?

Challenge Amount



\$

.00

How much money is awarded when this challenge is completed?

Customize your Challenge- Part 2

Does this match only apply to donations made within a certain time period? (optional)

Please note that times are in **Eastern Time**. 

Please make sure you convert your local time to Eastern to ensure your matches are distributed at the proper times!

Donation Matching Start Time (Eastern)

Donation Matching End Time (Eastern)

☐ Archived

Archive this challenge to mark it as inactive and prevent it from being displayed in future fundraising.

Save

Cancel

Update Challenge Parameters

- Challenge Start Time (required)
- Challenge End Time (required)

View Your Challenge!

\$10

\$25

\$50

CHOOSE YOUR OWN AMOUNT



Matches



Rudy's Pet Supply: Puppy Power

All gifts, no matter how small, will do mighty things for Cadi's Canines! If we receive 25 unique donors during The Great Give®, an additional \$1,000 will be unlocked thanks to a GENEROUS gift from our friends at Ruby's Pet Supply.



25 more donors unlocks **\$1,000!**

Get your match to count toward prizes!

All matches received by credit card gift will count toward prizes.

Matches received by check will count toward prizes IF:

- They are \$500 or more
- By 5:00pm on May 4 you have:
 - Set up the challenge on your profile
 - Provided TCF with a letter or email from the donor instructing the organization to use it as a match or challenge
 - Sent TCF a copy of the check

We're Here For You!

- Visit Our Help Center

<https://support.givegab.com/>

- Send us an email at

CustomerSuccess@givegab.com

- Chat with GiveGab's Customer Success







Team whenever you have questions or need a hand

- Look for the little blue chat bubble!



Start a conversation

The team typically replies in under 5m




[➤ New conversation](#) [See previous](#)

Find an answer quickly

[➤](#)

Live Webinars & Trainings

Join the fundraising experts at GiveGab for monthly and weekly live webinars and training sessions to get the most of your fundraising experience - online and off!



Questions?